

THINKWARE DASH CAM™
Quick Start Guide

U1000^{PRO}

Power the Dash Cam

Use one of the following options

The included cable options vary depending on the dash cam model purchased.



12V Power Cable



Hardwiring Cable*



OBD-II Cable*



*To enable Parking Surveillance mode, the dash cam needs to be powered by either the OBD-II Cable or Hardwiring Cable (professional installation recommended).

Download the App

Download the THINKWARE DASH CAM LINK App

On your smartphone, open the Google Play Store or Apple App Store, then download and install **THINKWARE DASH CAM LINK**.



THINKWARE
DASH CAM LINK

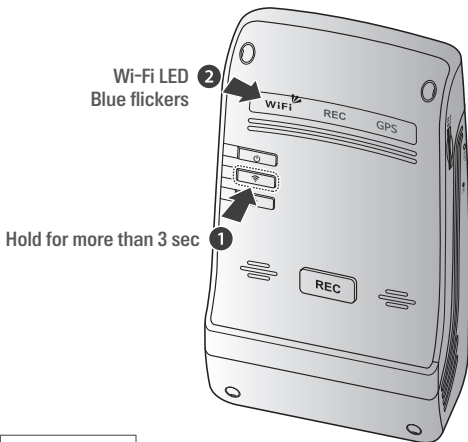


App Download

Connect to the App

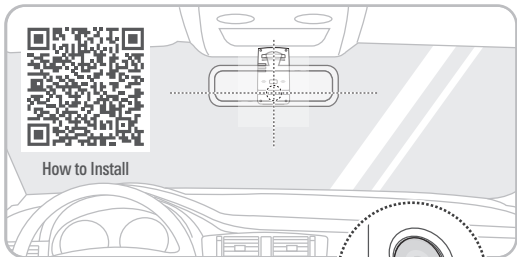
Follow the on-screen instructions

Press the Wi-Fi  button on the Dash Cam for at least 3 seconds.



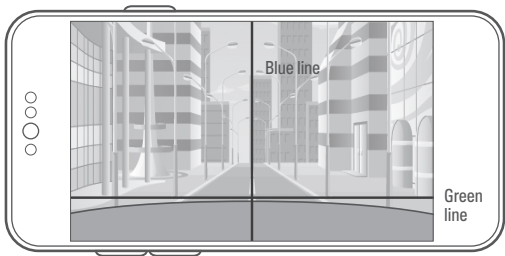
Won't connect to the App?

Install the Front Camera(1-Channel)

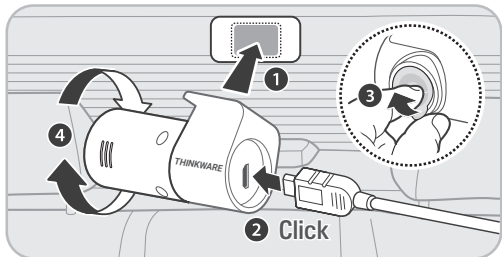


Open Live View in the app

- Blue line with the center
- Green line with the front edge of the hood

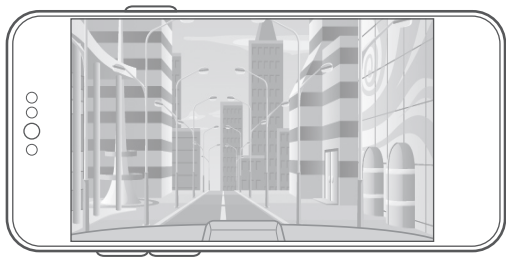


Install the Rear view Camera(2-Channel)



Open Live View Rear Camera in App

Launch **THINKWARE DASH CAM LINK** on your smartphone and tap **Live View > R** to switch the screen to the rear view.



Dash Cam Settings in the App

Default settings out of the box

The default settings are as follows, and you have the option to adjust them according to your preference.

Options	Description
Voice Recording	Enabled
System Volume	0 1 2 3
Parking Mode	Motion Detection
Smart Parking Mode	Enabled
Vehicle Type	Regular car
Battery Protection	Enabled
Super Night Vision	Parking Mode
ADAS	Disabled
Speed Stamp	Disabled
Safety Camera	Enabled
HDR	AUTO

THINKWARE CONNECTED

Exclusive features available through the THINKWARE CONNECTED app. Download the THINKWARE CONNECTED app on the Google Play Store or Apple App Store to access advanced features (availability depends on your service plan):

- Vehicle status monitoring while driving and parking
- Driving and parking impact notifications with video backup
- Last parking location and image capture transmission
- Remote live view
- Monthly driving report
- SOS notifications and SMS transmission
- Geo-fence feature



**THINKWARE
CONNECTED**



App Download



**How to Register
Your Dash Cam**

FAQ & Help Desk

Still have questions or issues?

For further assistance or to report any issues, please contact our support team.

- **North America**

1 (844) 865-9273

support@thinkware.com

- **United Kingdom**

44 (0) 333-121-0008

support.eu@thinkware.com

- **European Union**

(+49) 69-943-22200

support@thinkware.com



FAQs & Help Desk



User Guide

Please refer to **CS Information QR** in the box for other countries.