

# **THINKWARE DASH CAM™**

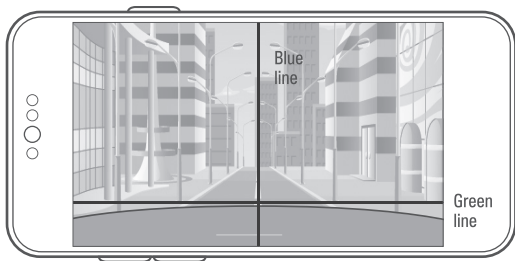
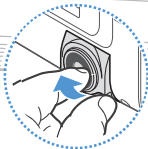
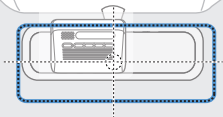
## **Quick Start Guide**

# **ARC 700**

# Install the Front Camera



How to Install



# Power the Dash Cam

## Use one of the following options

The included cable options vary depending on the dash cam model purchased.



**12V Power Cable**



**Hardwiring Cable\***



**OBD-II Cable\***



\*To enable Parking Surveillance mode, the dash cam needs to be powered by either the OBD-II Cable or Hardwiring Cable (professional installation recommended).

# Download the App

## Download the THINKWARE DASHCAM LINK App

On your smartphone, open the Google Play Store or Apple App Store and download and install **THINKWARE DASH CAM LINK**.



THINKWARE DASH CAM LINK



Apple Store (iOS)

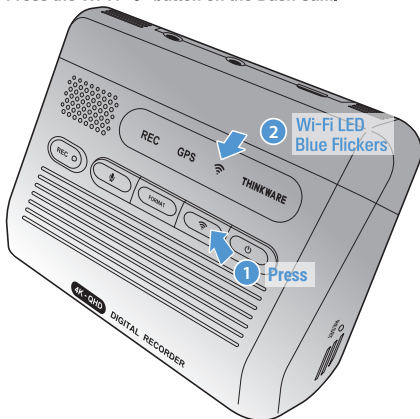


Google Play Store (Android)

# Connect to the App

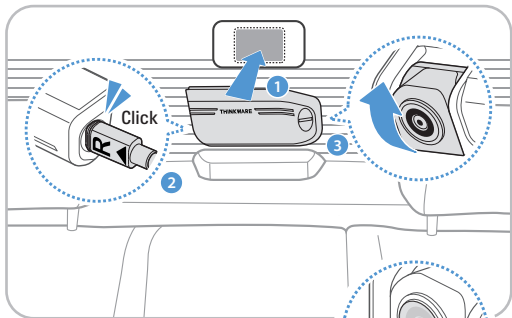
Follow the on-screen instructions

1. Press the Wi-Fi  button on the Dash Cam.



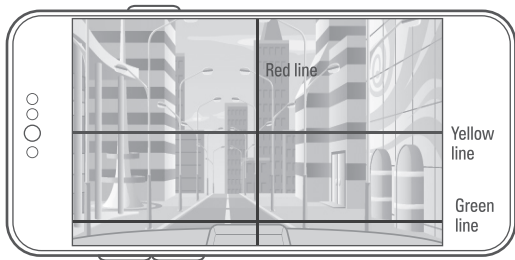
Won't connect to the App?

# Install the Rear View Camera



## Open Live View Rear Camera in App

- Red line with the trunk center
- Yellow line with the center of the horizon
- Green line with the trunk line



# Dash Cam Settings in the App

## Default settings out of the box

The default settings are as follows, and you have the option to adjust them according to your preference.

Options	Description
Voice Recording	Enabled
System Volume	0 1 <b>2</b> 3
Parking Mode	<b>Motion Detection</b>
Smart Parking Mode	<b>Enabled</b>
Battery Protection	Enabled Vehicle Type : <b>Regular</b>
Super Night Vision	<b>Parking Mode</b>
Speed Stamp	Enabled
Safety Camera	Enabled

# FAQ & Help Desk

## Still have questions or issues?

For further assistance or to report any issues, please contact our support team.

- **North America**  
1 (844) 865-9273  
[support@thinkware.com](mailto:support@thinkware.com)
- **United Kingdom**  
44 (0) 333-121-0008  
[support.eu@thinkware.com](mailto:support.eu@thinkware.com)
- **European Union**  
(+49) 69-943-22200  
[support@thinkware.com](mailto:support@thinkware.com)



FAQs & Help Desk

Please refer to **CS Information QR** in the box for other countries.